



View looking West towards St Edmunds Church

Question 1.

**Do you agree that there is a requirement for 3 & 4-bedroom homes in the area?**

- Agree
- Disagree
- Any further comments or ideas?



3D Aerial View

Question 2.

**Do you agree that the layout should introduce a new link east-west through the development?**

- Agree
- Disagree
- Any further comments or ideas?

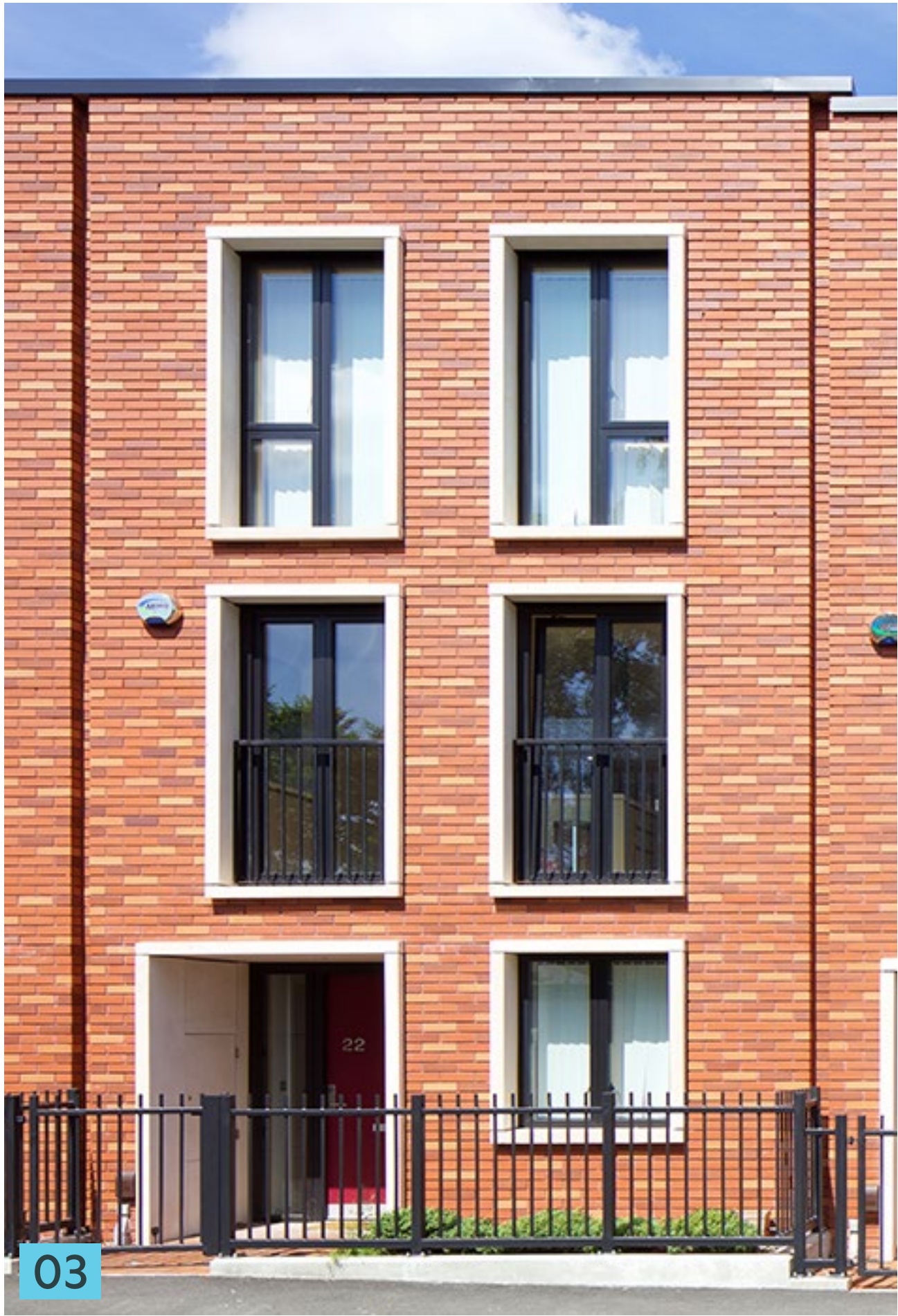


View of new east-west link from Sheriff Street











**Question 1 - Comments?**

**Question 2 - Comments?**

**Question 3 - Comments?**