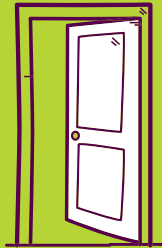


# FIRE SAFETY



This building is designed to contain a fire within the flat or area where it starts.

## FIRE DOORS SAVE LIVES



### DO NOT

leave a fire door wedged or propped open



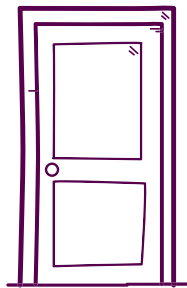
### NEVER

disconnect an automatic closer

## IF A FIRE BREAKS OUT IN YOUR FLAT OR ON YOUR FLOOR

1

Leave the room where the fire is and close the door.



2

Alert anyone in your flat and leave. When leaving the flat, close the door behind you. **Do not** stay to put the fire out.



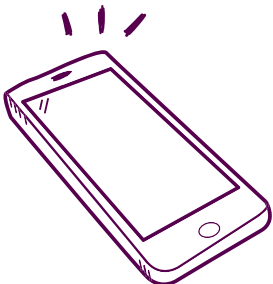
3

Use the staircase to exit the building. **Do not** use the lift.



4

Dial 999 and wait for the fire service to arrive. **Do not** re-enter the building.



## IF YOU SEE OR HEAR OF A FIRE IN ANOTHER PART OF THE BUILDING

1

It will normally be safest for you to remain in your own flat.

2

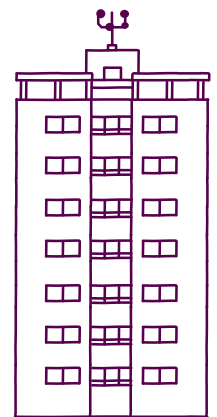
However, you are of course, free to leave the building if you would prefer to do so.

3

If you are instructed to leave by a member of the emergency services or waking watch, you should do so immediately.

4

In either case, use the staircase to exit the building. **Do not** use the lift.



If you notice any fire doors within the building that are damaged or wedged open, please call us on **Freephone 0800 027 7769**.