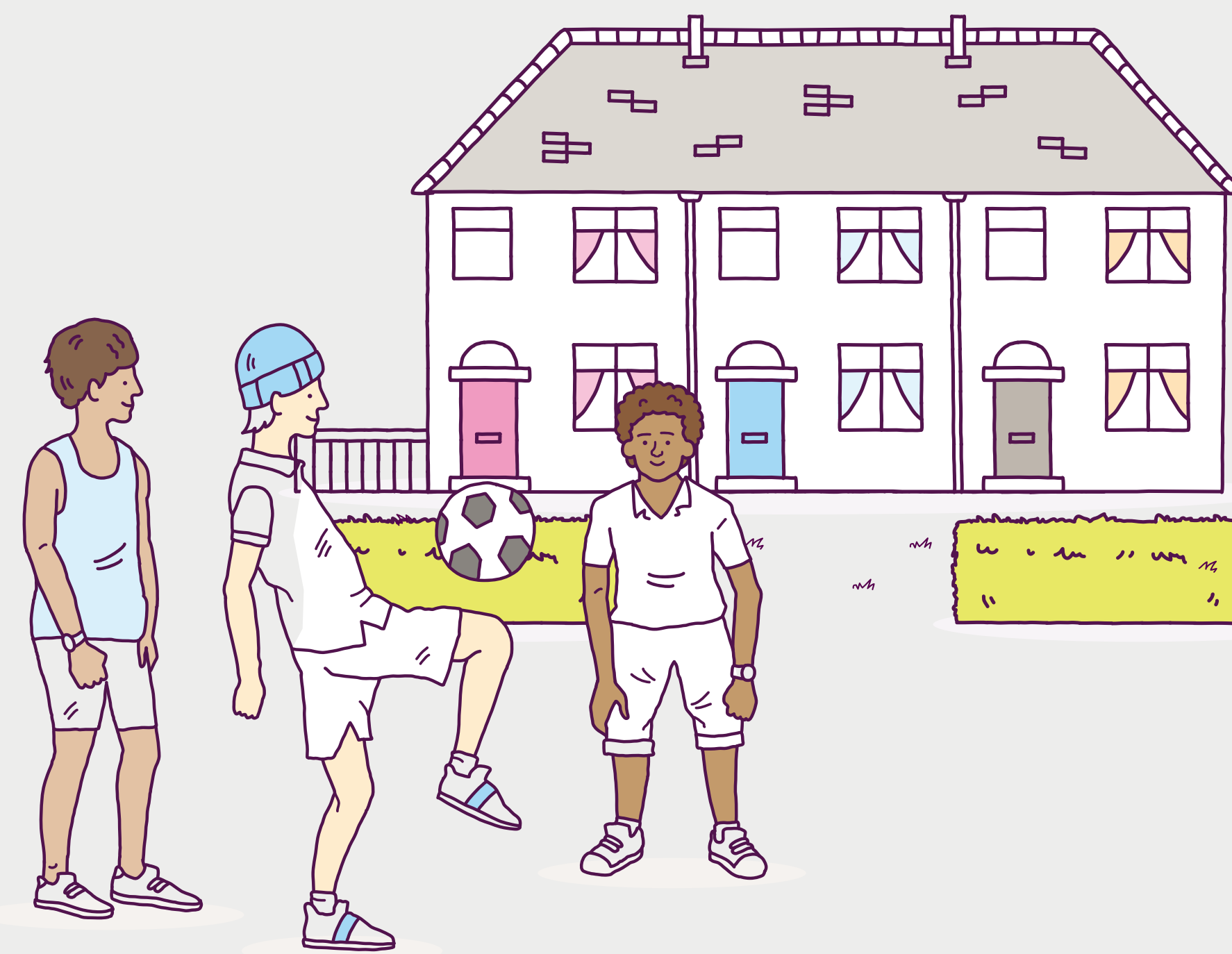
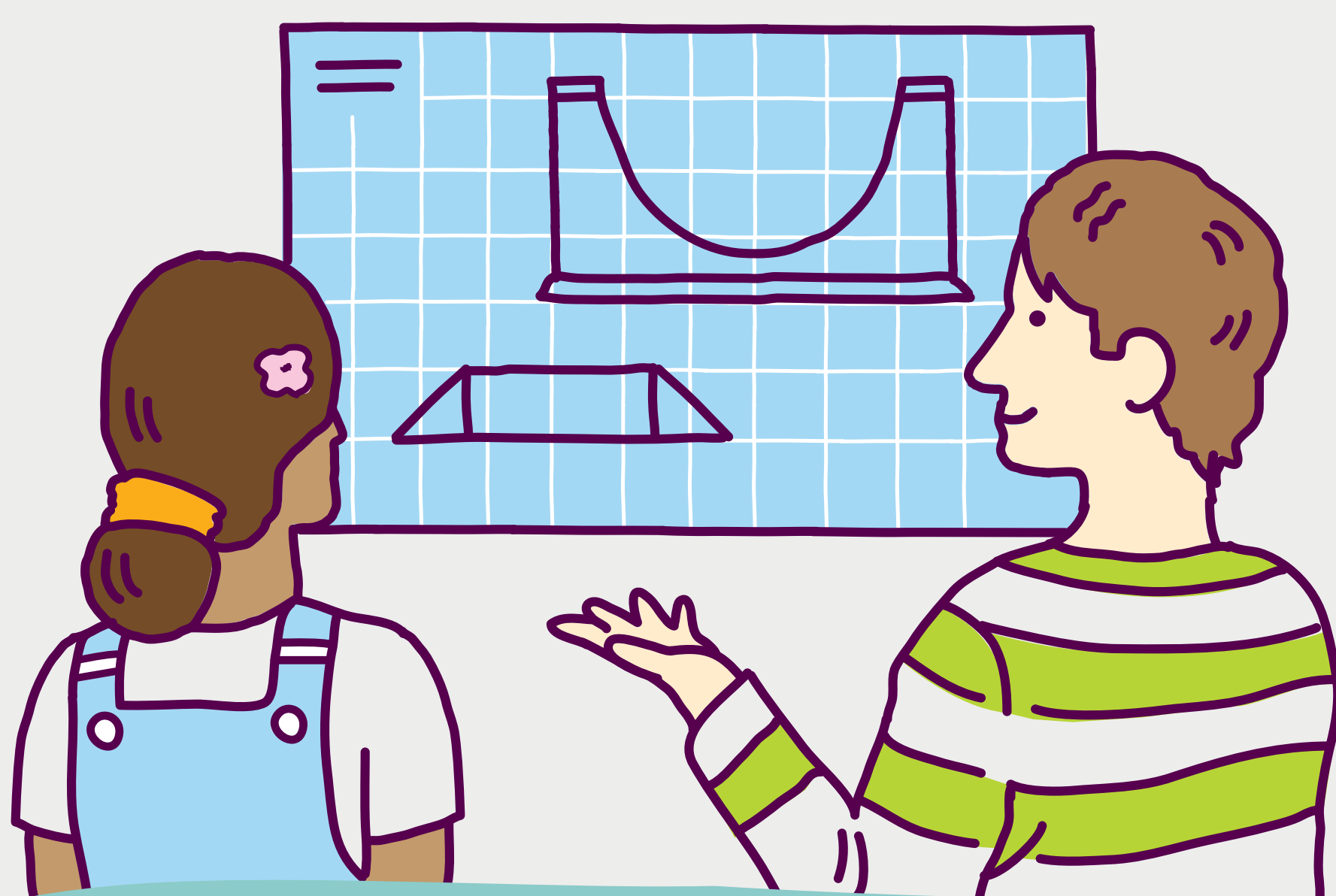


# NEW PIONEERS PROGRAMME

**The Rochdale New Pioneers Programme (NPP) is about supporting residents in one of the most deprived parts of Greater Manchester into better jobs and better, healthier lives.**



**Central Rochdale has some of the worst outcomes for residents in terms of employment, health and disabilities in the country and something different is needed if we want this to change. The NPP is our proposal for making that change.**



**The NPP is a collaboratively designed new support programme for residents in Lower Falinge and College Bank to increase employment and career progression. It starts from the basis that many residents are willing and able to work more and aspire to better jobs, but are stuck in a situation of underemployment, dependent on government benefits through a range of circumstances.**



# NEW PIONEERS PROGRAMME



The Programme has three mutually supporting elements, which together provide the opportunity for lasting change:

## A NEW PIONEERS INCOME

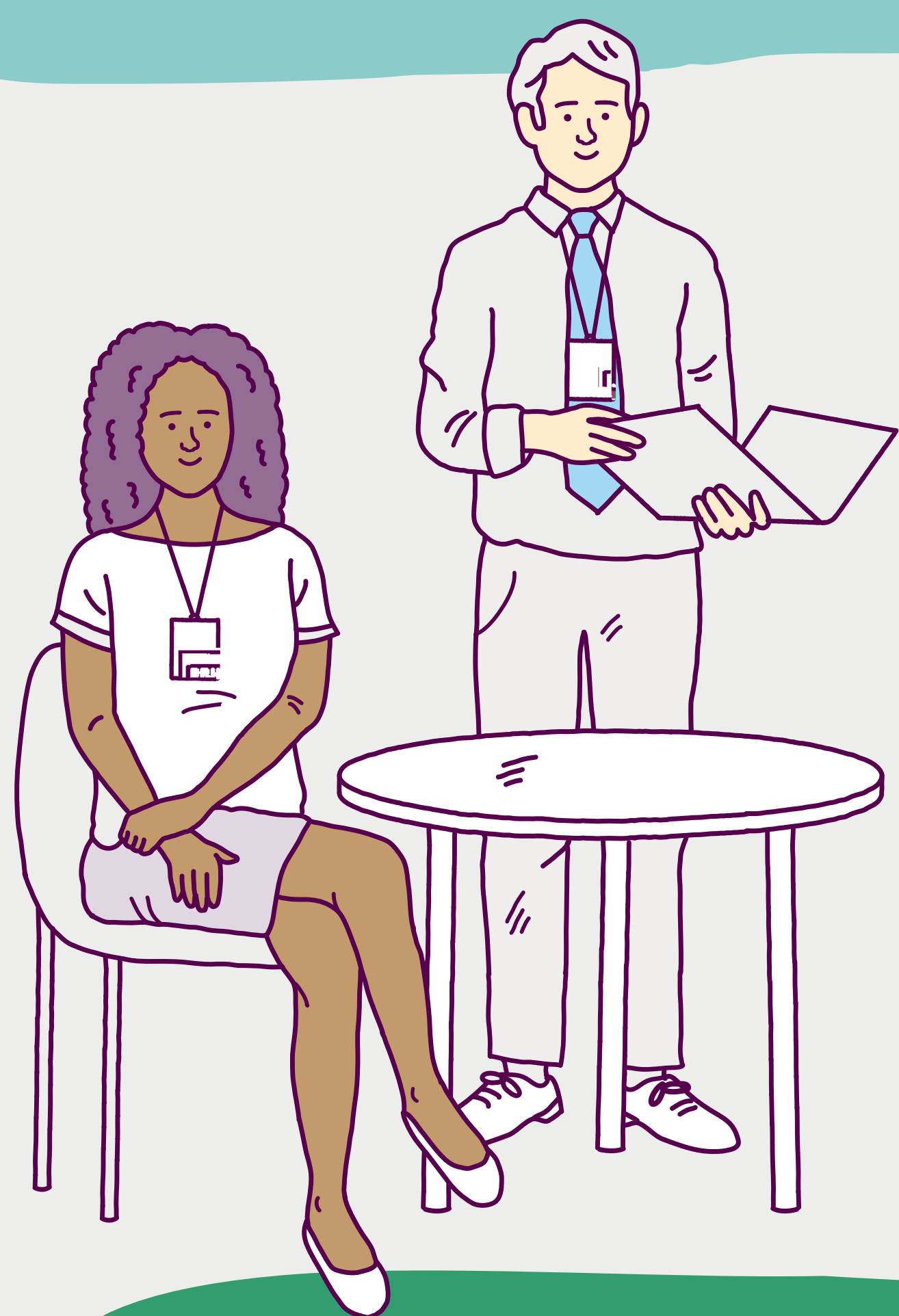
A basic income instead of existing benefits, to provide financial stability and flexibility for participants in the programme to make longer term planning of their careers and lives.

## A NEW PIONEERS SPACE

A community space, integral to the wider physical regeneration of the neighbourhoods, where the programme can be based. This will enable participant activities, learning and networking, and the opportunity to create a broader community of mutual support and aspiration.

## DEDICATED CAREERS BROKERS

To provide intensive, personalised support to guide participants in investing in themselves and building networks of support and opportunities.



The Programme is aimed at working-age adults living locally who are either working part-time already or out of work on Employment and Support Allowance or Carer's Allowance. The programme will provide intense support and a basic income for participants for 12 months and initially intends to run for three years to provide support to 120 New Pioneers.



# NEW PIONEERS PROGRAMME – NEXT STEPS

We are looking to implement and fund this initial phase collaboratively, with local public bodies, national government, and philanthropic and social investors all with an interest in testing the merits of this approach.



This launch event marks a shift in the work from design towards implementation, helping us to improve the life chances of the residents of Central Rochdale.



The NPP has not been developed in isolation: it is a key part of a broader people and place strategy for Central Rochdale to ensure the opportunities of physical regeneration can provide lasting and meaningful benefits to the residents and communities.



We are already in the delivery phases of the physical regeneration and will continue developing the detail of the next phases of development.